



Hate Crime In Idaho



Hate Crime in Idaho for 2009

Definition

- A criminal offense committed against a person or property which is motivated in whole or in part, by the offender's bias against a race/national origin, religion, sexual-orientation, mental/physical disability or ethnicity -

Hate Crime

Reported Incidents	35
Change from 2008	16.7%
Rate per 100,000*	2.3
Incidents Cleared	45.7%

Idaho was one of the first twelve states to pass legislation regarding malicious harassment. Idaho Code 18-7902 and 67-2915 depict policy on hate crime, its collection and reporting. Idaho gathers hate crime information as an additional element and/or characteristic of the offenses reported by law enforcement.

Hate crime incidents are identified on the subjective motivation of the offender(s). Law enforcement investigations solely determine the sufficient objective facts to lead to a reasonable and prudent conclusion that the offender's actions were motivated by bias against a racial, religious, ethnic/national origin, mental/physical disability, or sexual-orientation group.

Accurate data collection for hate crime depends heavily on proper training of law enforcement to recognize such incidents and the cooperation and desire of law enforcement communities to report these offenses without the influence of special interest groups, media, and politics.

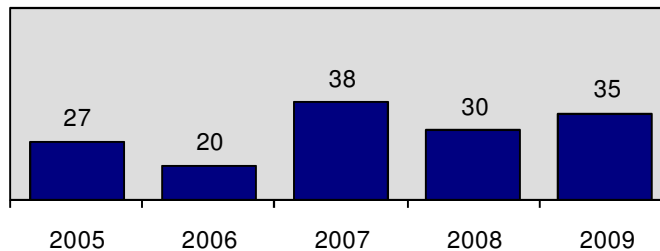
Training material for recognizing and reporting hate crime has been distributed to all law enforcement departments.

Information derived from the following indicators can establish supportive facts to correctly identify hate bias motivation.

- ◆ Bias-related drawings, markings, symbols, or graffiti were left at the crime scene.
- ◆ Bias-related oral comments, written statements, or gestures made by the offender which indicate his/her bias.
- ◆ The incident coincided with a holiday relating to, or a date of particular significance to, a race, religion, disability, ethnicity, or sexual-orientation.
- ◆ The offender and the victim were of different race, religion, ethnicity, or sexual-orientation.
- ◆ Certain objects, items, or things which indicate bias were used in the commission of the crime.
- ◆ The victim is a member and/or engaged in activities promoting a racial, religious, disability, ethnic, or sexual orientation group.
- ◆ Several incidents occurred in the same locality, at or about the same time, and the victims were all of the same race, religion, disability, ethnicity, or sexual-orientation.

22.9% of hate crime incidents were committed by multiple offenders.

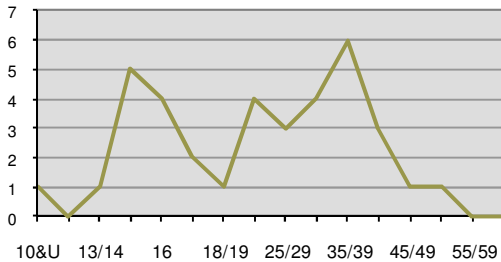
**Hate Crime Incidents
5 Year Trend**



* Adjusted population base: 1,543,741.

Hate Crime in Idaho for 2009

2009 Hate Crime Victims by Age



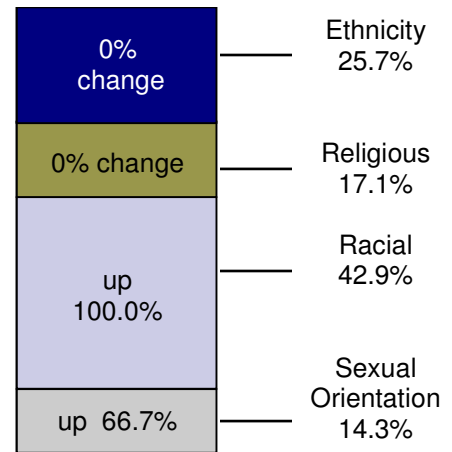
Reported Offenses of Hate Crime Incidents

Offense	Reported
Destruction of Property	10
Simple Assault	10
Intimidation	7
Aggravated Assault	6
Larceny	2

Idaho Hate Crime by Motivation in 2009

Nature	Type Motivation	Reported
Racial	Anti Black	10
	Anti American Indian/Alaskan	0
	Anti Multi Racial	3
	Anti White	2
	Anti Asian	0
Ethnicity	Anti Hispanic	9
	Anti Other Ethnicity	0
Sexual Orientation	Anti Male Homosexual	1
	Anti Homosexual	2
	Anti Female Homosexual	0
	Anti Heterosexual	1
	Anti Bisexual	1
Religion	Anti Other Religion	0
	Anti Islamic	4
	Anti Jewish	0
	Anti Protestant	0
	Anti Catholic	2
	Anti Multi Religion	0
	Anti Atheist/Agnostic	0
Disability	Anti Physically Disabled	0
	Anti Mentally Disabled	0
Total		35

Distribution of Hate Crime for 2009

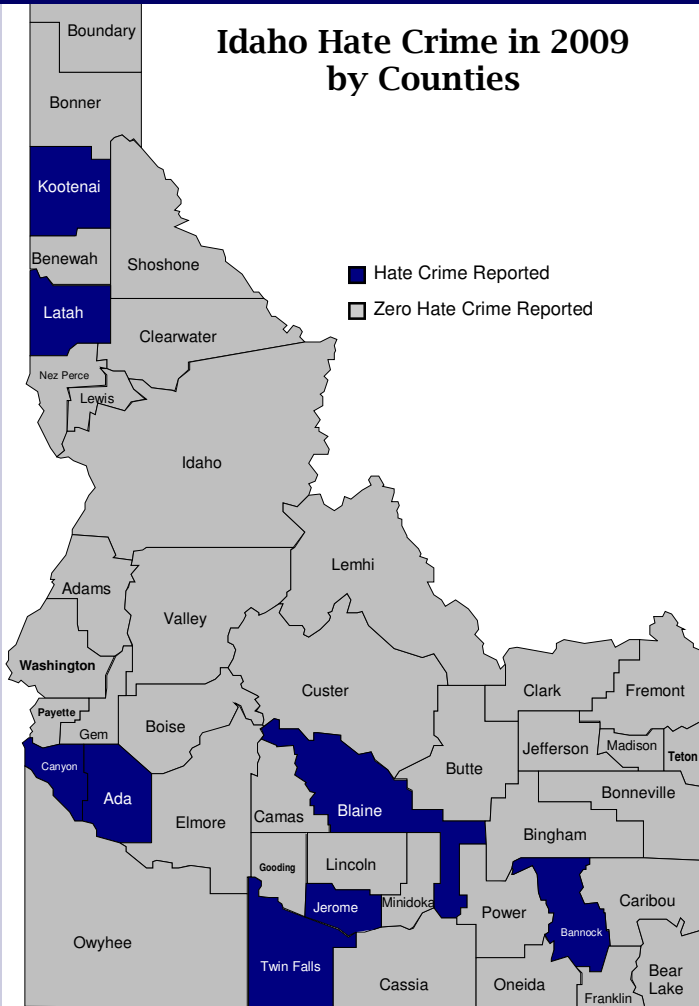


19.4% of hate crimes against persons were female.

A property loss of \$6,757 resulted from hate crime vandalism incidents.

Hate Crime in Idaho for 2009

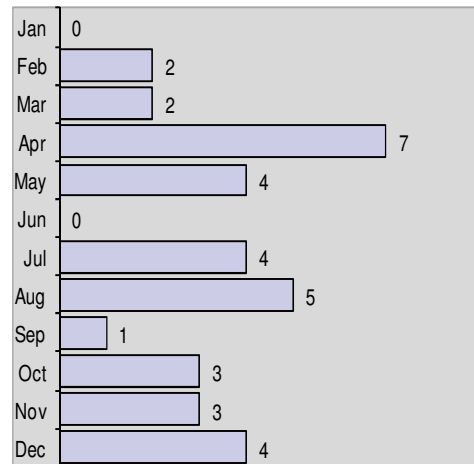
Idaho Hate Crime in 2009 by Counties



Reporting Agencies

Agency	Incidents
Nampa PD	10
Coeur d Alene PD	8
Boise PD	7
Hailey PD	2
Caldwell PD	2
Jerome PD	2
Pocatello PD	1
Bellevue PD	1
Moscow PD	1
Twin Falls PD	1

Hate Crime by Month in 2009



Hate Crime by Location

Location	Reported
Residence	11
Highway/Street	9
School/College	4
Bar/Night Club	2
Office Building	2
Parking Lot/Garage	2
Church	1
Discount/Dept. Store	1
Restaurant	1
Other/unknown	1
Specialty Store	1